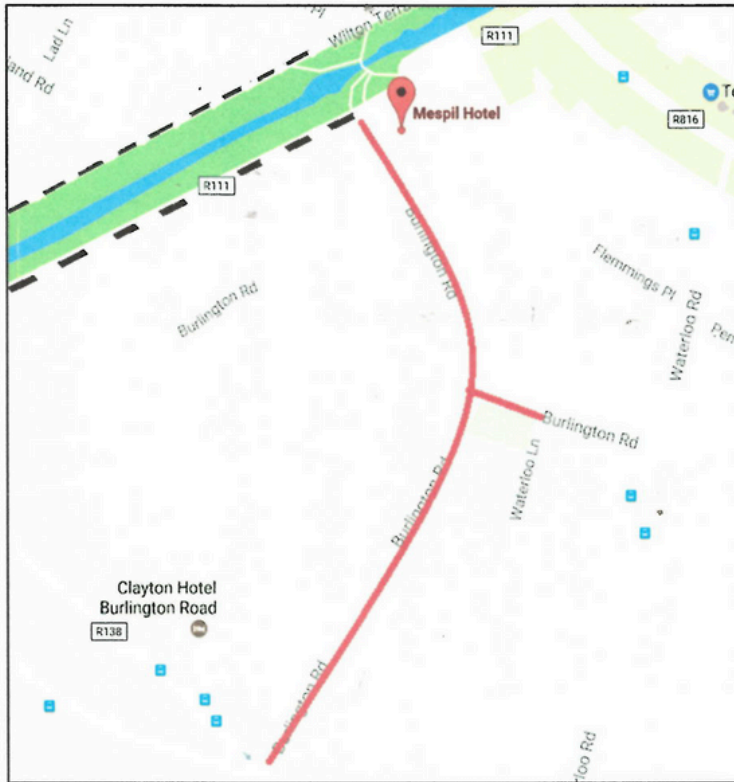




ON STREET PARKING

PARKING TIMES

The on-street parking times vary and are sign-posted, please take care that you have legally parked according to the times displayed.



Payable Mon – Fri
8am – 6:30pm only



Payable Mon – Sat
7am – 7pm

PLEASE BE ADVISED

Clamping is in operation throughout Dublin city and it is ultimately your responsibility to comply with the Pay and Display parking rules.

PAY AND DISPLAY RULES

- The max. allowed parking time is 3 hours.
- One hour after paid parking times expire, you can buy a ticket for the following morning.
- You must vacate a parking space after your ticket has expired.
- You must not return to the same street until 1 hour has elapsed.

Do Not Park On/In...

- Double yellow lines • Single yellow lines • Parking bays reserved for people with disabilities • Loading bays • Clearways and Bus lanes • Cycle tracks
- Pedestrian areas • Bus and coach parking areas • Taxi ranks and Bus stops



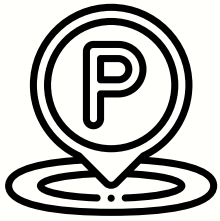
Mespil Road - Pay & Display: Monday - Saturday 7:00 - 19:00



Burlington Road - Pay & Display: Monday - Saturday 8:00 - 18:30



Wilton Place - Pay & Display: Monday - Saturday 7:00 - 19:00, max stay 3 hrs



ON STREET PARKING

Parking in Dublin City

1. Park in a pay and display space

Look for street signs showing parking spaces.
Don't park in a disabled parking bay unless you have a valid disabled person's parking permit.



2. Check the hours & zone

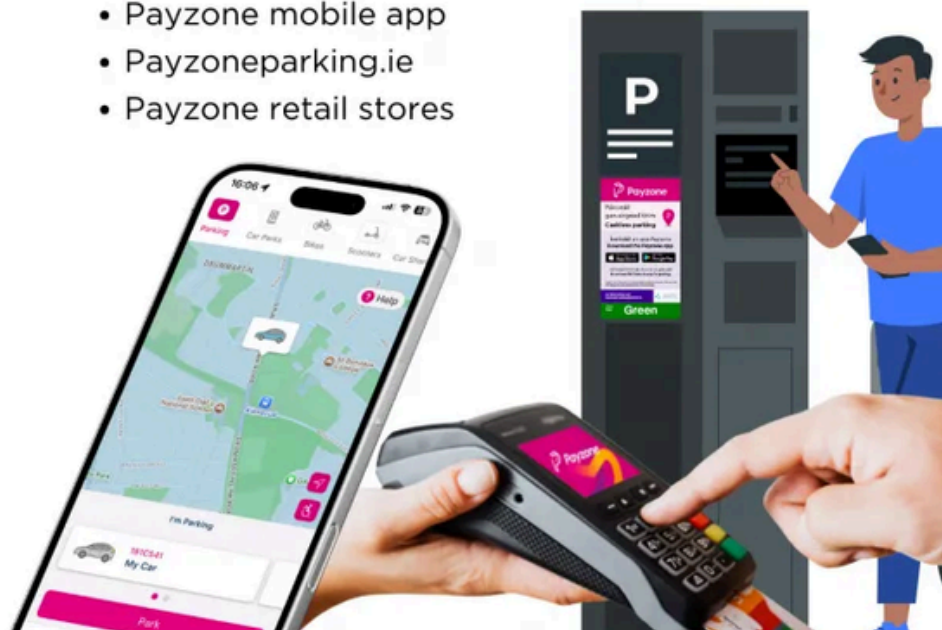
Always check signage for parking hours and to confirm the parking zone.

Zones are marked by colour.
Some areas require payment after 7pm and on weekends.

3. Pay for parking

Payment options include:

- On-street parking meter
- Payzone mobile app
- Payzoneparking.ie
- Payzone retail stores



More information can be found [HERE](#).